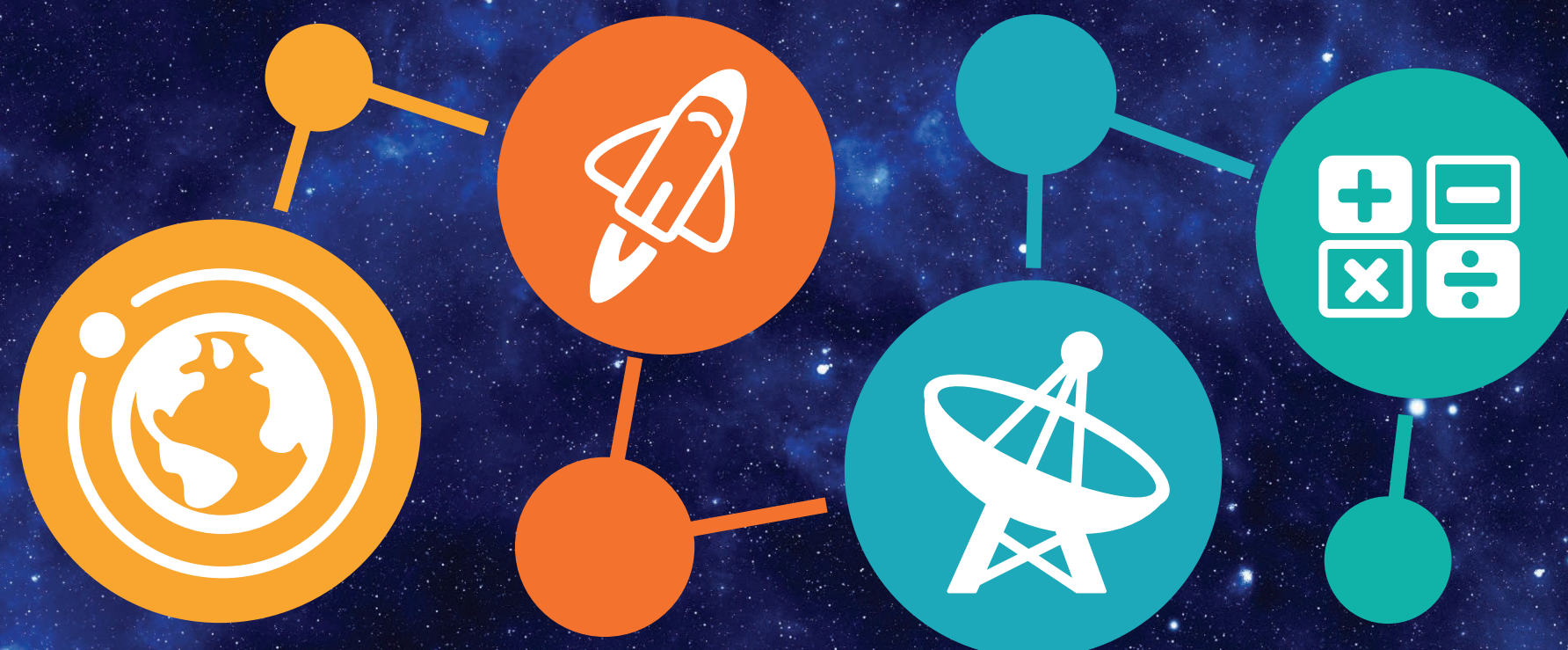




Thursday, August 11, 2016
8:30 a.m. - 4:30 p.m.

The Christa McAuliffe Center at Framingham State University and Challenger Center present



S • T • E • M

**Education Through the
 Lens of Space Exploration**



9-10:30 a.m.

A Multidisciplinary & Interdisciplinary Approach to Space Exploration

Frank White, Author of "The Overview Effect - Space Exploration and Human Evolution"; **Tess Caswell**, PhD Candidate and Applicant to the NASA Astronaut Program; **Michelle Richardson**, Senior Food Technologist at Natick NSRDEC; **Kelly Kolodny**, PhD, Education Professor at Framingham State University

10:45-11:45 a.m.

Sports on the Moon

Arthur Eisenkraft, Professor of Physics, Distinguished Professor of Science Education; Director of the Center of Science and Math in Context

1-2:30 p.m.

The Future of Space Exploration and Its Impact on STEM Education

Gregory H. Johnson, NASA Astronaut, President and Executive Director of Center for the Advancement of Science in Space; **Ryan Mudawar** Manager of Academic and Workforce Programs at Massachusetts Life Sciences Center; **Steve Vinter**, Engineering Director, Google Inc., Cambridge; Co-Founder, MassCAN

3-4:30 p.m.

McAuliffe Center Open House

Tours of the Challenger Learning Center, Virtual Tour of the International Space Station and Planetarium Shows

*For more information, or to register for the event, visit christa.org/clconference/
 \$50 registration fee includes lunch and 8.5 Professional Development Points.
 FSU students may apply for a fellowship from Massachusetts Space Grant Consortium to cover the registration fee.*